



## dcTrack

dcTrack provides simple point-and-click information and visualization to enable quick, intelligent placement of IT equipment, capacity management and accurate asset tracking.

### Intelligent Capacity Management

- ▶ Available power, space and network
- ▶ Search, place and reserve
- ▶ Complete power/network path

### Change Management

- ▶ Workflow for moves, adds and changes
- ▶ Approvals and status
- ▶ APIs to third-party ticketing

### Accurate Asset Management

- ▶ All data center physical resources and logical connections
- ▶ Maintenance/lease information
- ▶ Intelligent rack asset strip

### Platform Options

- ▶ VMware® Virtual Appliance
  - ▷ Our application software, database and hardened Linux® operating system are fully tested and ready to load on your VMware platform
- ▶ Raritan Hardware Appliance
  - ▷ Our application software, database and hardened Linux operating system are loaded onto our enterprise-class, rack-mountable 2U server with dual power supply and redundant fans

## dcTrack

### Easily manage data center capacity, assets and change

dcTrack is an award-winning, easy-to-use data center infrastructure management (DCIM) solution that provides you with real-time information about your facilities, networks and IT. dcTrack clearly visualizes your infrastructure to help you manage placement of your IT equipment, make informed capacity management decisions and keep accurate track of your data center assets. dcTrack is easy to implement, integrate, administer and operate, providing a fast ROI.



### Optimize Your Data Center Planning with dcTrack

#### Intelligent Capacity Management

- ▶ Easily search for and reserve space, power and network connectivity for all IT assets
- ▶ Rich filtering allows quick search by several asset parameters
- ▶ Time-based reservations to support what-if capacity analysis
- ▶ Replace several inaccurate Excel® and Visio® files and trips to the data center

### Manage Your Data Center Accurately with dcTrack Asset Management

- ▶ Quickly locate servers, network and storage equipment
- ▶ Track detailed information on data center MEP equipment
- ▶ Trace physical and logical relationships between equipment
- ▶ Integrates with Raritan's intelligent Asset Management Tags (AMT) for real-time asset location in racks to the 1U level

### Make Changes Quickly to Your IT Equipment (Move, Add and Delete) with dcTrack Change Management

- ▶ Create work orders, approvals and verification to ensure work is done accurately and on time
- ▶ Enforce best practices workflow and meet ITIL framework guidelines
- ▶ Improve productivity and efficiency of data center operations staff

### Add Sophisticated Visualization, Analysis and Reporting with dcTrack

- ▶ Visualize AutoCAD® and Visio floor plan drawings in real time
- ▶ Work with a feature-rich, easy-to-use and intuitive dashboard
- ▶ Visualize floor space, front/rear-rack/row Visio-like elevations
- ▶ Visualize complete power chain and network connectivity chain
- ▶ Real-time power and energy reporting

# A real-time data center infrastructure management solution that's powerful AND easy to use

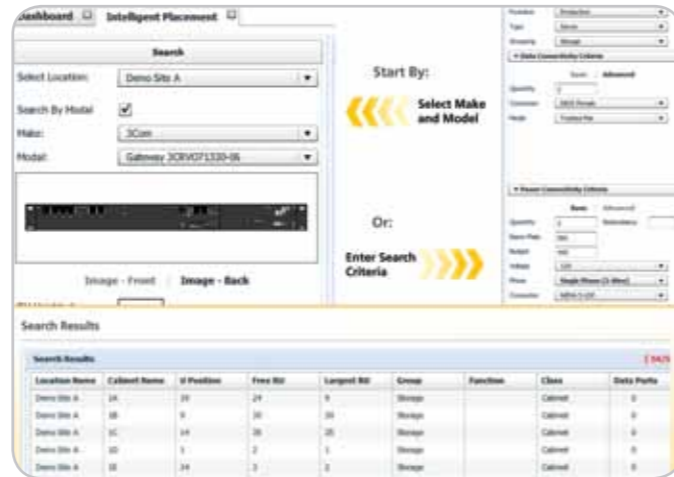
## Capacity Management Dashboard

dcTrack provides real-time resource utilization data for better electrical, cooling, floor, cabinet, cable and network capacity planning. Quickly see how much capacity you're using and, more importantly, how much is available.



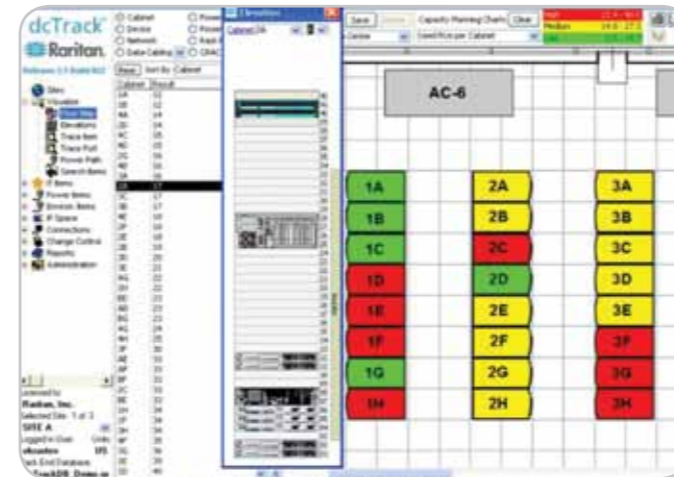
## Intelligent Search, Place and Reserve

Quickly find space, power and network connectivity for IT devices, simplifying capacity planning and change management. Reserve capacity for future provisioning of new IT equipment.



## Visualize Floor Map

The data center floor map is linked in real time to AutoCAD or Visio floor plans. CAD drawing changes are immediately visible and recognized as new dcTrack objects. Customers can use multiple color-coded charts to view heat, space, weight and power load distributions.



## Visualize Cabinet and Row Elevations

dcTrack can visualize a group of cabinet elevations. Cabinets can be grouped by data center rows or logical groupings. With another click, the elevation views can be changed to front, rear or descriptive text views.



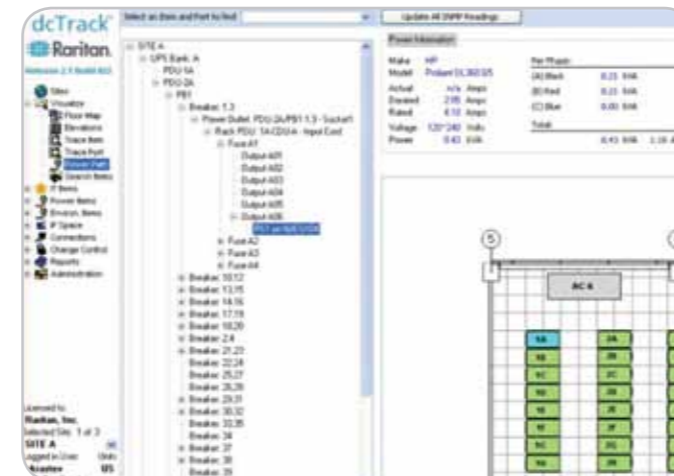
## Complete Power Distribution Management

dcTrack uniquely offers complete power chain management. Power management begins with the UPS power feeds, supporting virtually any type of power distribution design. This screen displays the circuit breaker panel.



## Visualize Power Path

dcTrack offers a unique tool to visualize the full electrical circuit – from the data center power source to the rack PDU receptacle. dcTrack automatically calculates the power load at intermediate points in the electrical circuit path.



## Intelligent Asset Tracking Integration

With Raritan's unique Asset Management Tags and Asset Management Sensors (AMS), dcTrack provides an accurate, automated, real-time inventory of all IT assets and their locations, down to the 1U level.



## Network Connectivity and Data Cabling Items

dcTrack supports all known cable types, connectors and topologies. Users can manage real-world cable infrastructure and labeling scenarios, with support for various design architectures.



## Complete Power Chain Management and Monitoring

- ▶ Monitor power loads and environmental data
- ▶ Determine the power loads at any point in the circuit path using derated values and actual readings
- ▶ Achieve a balanced load across all three phases

## Easy to Deploy and Use

- ▶ Available as a VMware® virtual appliance so installation is fast and easy
- ▶ Includes application software, database and operating system, all in one image
- ▶ Web-based access simplifies setup and administration
- ▶ Import wizards and auto-discovery tools accelerate implementations

## A Complete Solution with Training and Support

- ▶ Pay-as-you-grow, rack-based license model results in superior customer value
- ▶ Software maintenance plans include documentation, training videos, library updates and software upgrades
- ▶ Implementation and training services available

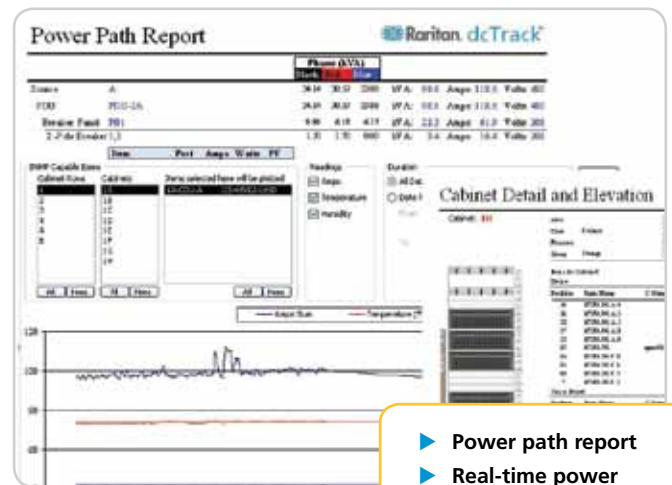
## Platform Options

- ▶ VMware Virtual Appliance
  - ▶ Our application software, database and hardened Linux operating system are fully tested and ready to load on your VMware platform
  - ▶ Tested with ESX, ESXi and Player

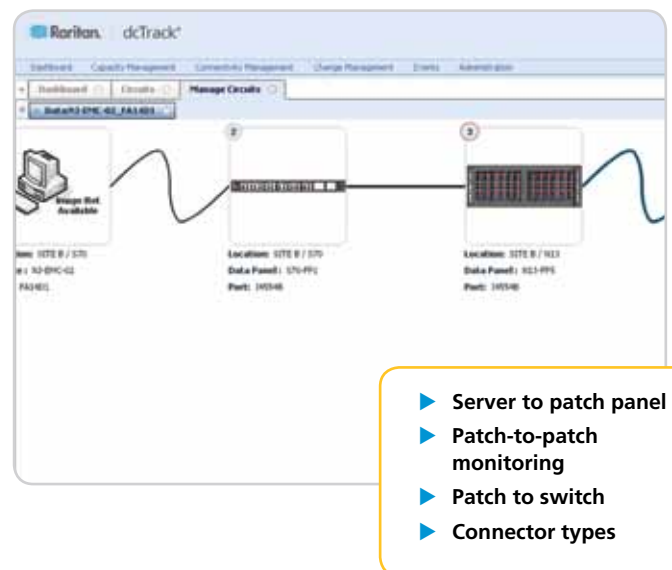
## Open Data Model

- ▶ Open database connectivity capabilities let you use your existing data warehouse and reporting system to generate custom reports

## Reports and Search Utilities



## End-to-End Multi-Hop Connections



Ready to learn more about Raritan's dcTrack?

Call +31 (0)10 284 4040 or visit [www.raritan.eu/dcTrack](http://www.raritan.eu/dcTrack) today.

© 2012 Raritan Inc. All rights reserved. Raritan®, Know more. Manage smarter.™ and dcTrack® are registered trademarks or trademarks of Raritan Inc. or its wholly-owned subsidiaries. All others are registered trademarks or trademarks of their respective owners. For more information, please visit [www.raritan.eu](http://www.raritan.eu)